

KARASTAN



Our Collaborators



MARTIN LESJAK AND ANASTASIA SU

Martin Lesjak and Anastasija Sugic are the creative duo behind 13&9, an interdisciplinary Austrian design collective that celebrates the unique talents and partnership between Lesjak's award-winning architecture firm INNOCAD and Sugic's product and fashion line ANASTASIA SU.

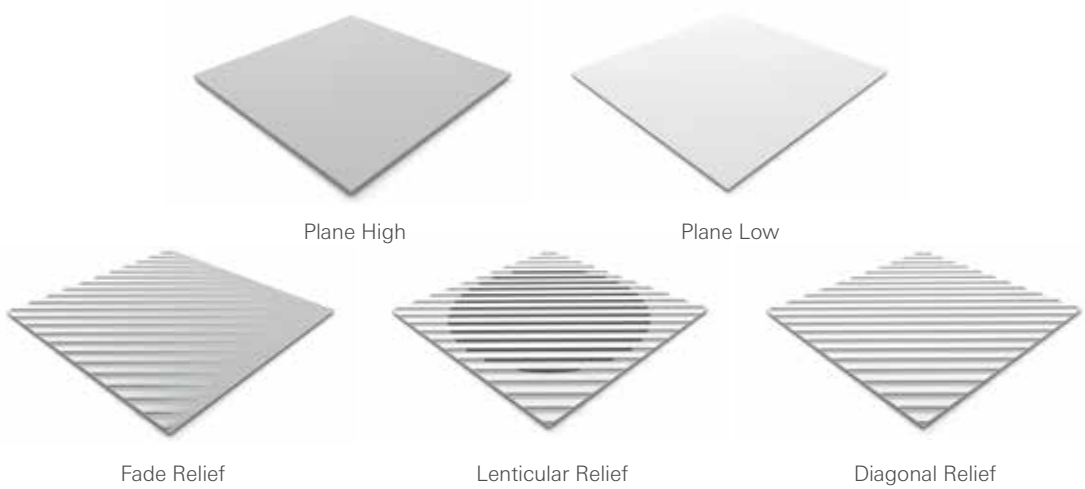
The multidisciplinary team, who share the titles of CEO and Creative Director, have received numerous accolades and international notoriety for outstanding achievements in furniture, fashion, accessories, lighting, and art objects, as well as industrial design and audio installation projects. Lesjak was most recently named Contract Magazine's 36th Designer of the Year. The result of this dynamic partnership gives the brand the flexibility to go beyond designing projects that are not only aesthetically pleasing but are comprehensive solutions with meaningful context.



13&9

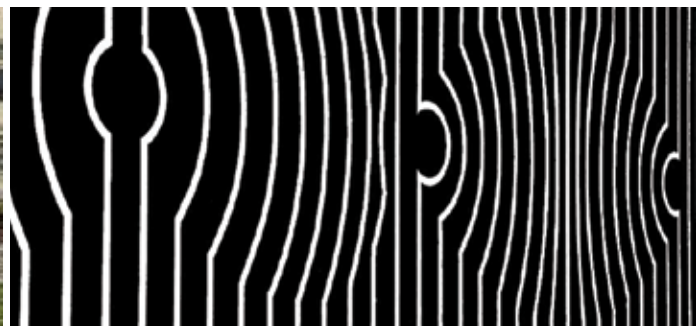
THE SOUL
OF DESIGN

Patterns & Inspiration



LENTICULAR PATTERNING

Designed to be dynamically moving based on the user's point of view, Moving Floors was inspired by the geometry and illusion of op-art and the multi-layered beauty of our cultural landscape. This collection empowers designers to create kinetic floor scapes through limitless combinations of geometric patterning and coordinating textured solids.





Plane Low, Fade Relief and Diagonal Relief, color 989 Dark Grey



Fade Relief, color 989 Dark Grey



Plane High, Plane Low, Fade Relief and Diagonal Relief, color 656 Green
combined with Plane Low, color 929 Light Grey



Plane High, Plane Low, Fade Relief and Diagonal Relief, color 656 Green combined with Plane Low, color 929 Light Grey



Lenticular Relief, color 922 Light Grey Copper



Lenticular Relief, color 922 Light Grey Copper



Plane Low and Fade Relief, color 929 Light Grey



Plane High and Plane Low, color 929 Light Grey

Colorways



Diagonal Relief



Plane High*



Plane Low*

**Note the change in color between Plane High and Plane Low styles. Plane Low matches the low pile height and Plane High matches the high pile height of the relief pattern.*



Diagonal Relief



Fade Relief



Plane High*



Plane Low*



Lenticular Relief



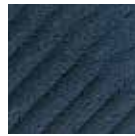
454 Lavender



459 Lavender Silver



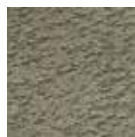
556 Blue



656 Green



846 Teak



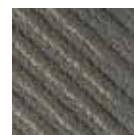
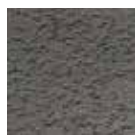
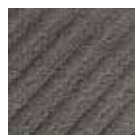
929 Light Grey



922 Light Grey Copper



968 Medium Grey



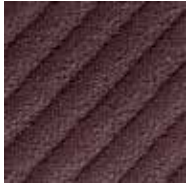
961 Medium Grey Gold



989 Dark Grey



Color Inspiration



Lavender



Blue



Green



Dark Grey



Medium Grey Gold



COLOR INSPIRATION

Architectural landscapes that are infused with pops of color are the inspiration behind the Moving Floors collection. Bringing the outside in, these versatile and visually kinetic patterns allow designers to create interactive floorscapes from colors derived from the ocean, earth, flora and fauna.



Mass Appeal Collection

Mass Appeal's luxury vinyl tile, 18"x36" loose lay format creates bold installations with innovative modern textures. Drawing inspiration from oxidized metal and natural linen textures, Metal and Matter are beautiful, versatile and eclectic. With pops of metallic sheen, this flooring solution appears multi-dimensional and coordinates beautifully with the Moving Floors collection, for textual layering and harmonic patterning.



Metal

The natural oxidation of metal when exposed to the elements inspires this pattern, which is available in 12 colors.



Matter

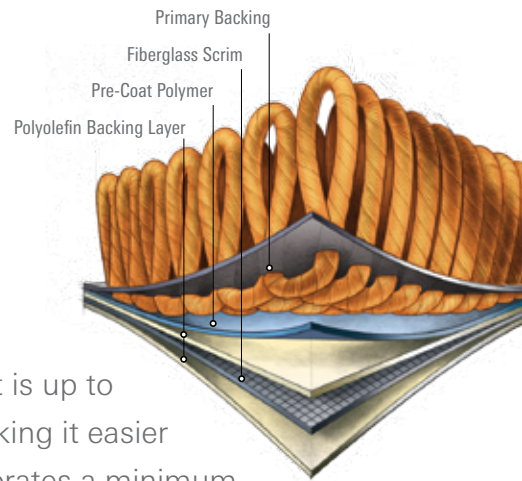
The subtle striations of natural linen have evolved into this unique pattern, available in six rich neutral colors.

The Mass Appeal Collection contains a minimum of 8% bio-based renewable resource content by total product weight. It avoids harmful phthalates by substituting a new bio-based, rapidly renewable plasticizer without sacrificing performance, quality and maintenance.

- Loose Lay LVT with a 20 mil wear layer and 0.20"/5mm gauge create durability that holds up under heavy commercial traffic
- M-Force™ Ceramic Enhanced Urethane finish provides the utmost in longevity and extends the life of the product
- Twice as thick as conventional LVT
- and heavy enough to keep tiles in place
- Built-in enhanced acoustical layer for sound reduction in high traffic areas, eliminating the need for underlayment
- Non-skid backing ensures post-installation movement is minimized
- Installs quickly with only perimeter glue
- Quick ship available
- Limited 10 year commercial warranty

EcoFlex™ NXT

carpet tile backing



EcoFlex NXT is a polyolefin carpet tile backing that is up to 40% lighter than similar competitive products, making it easier to install and less expensive to ship. It also incorporates a minimum of 35% pre-consumer recycled content.

duracolor

FOREVER STAIN FREE

The performance standard for every application, Duracolor fiber is forever stain free, forever sustainable and forever beautiful, guaranteed*. Carpet is easy to maintain with inherent stain resistance and water-only stain removal.

Declare.

Mohawk Group is participating in the Living Building Challenge™ Declare program. By providing a clear, elegant and informative “nutrition-label” for building products, Declare aligns with our commitment to transparency in support of the Living Building Challenge’s Red List and Appropriate Sourcing Imperatives—streamlining material documentation and project certification.

Moving Floors is a red list free product.



* See Mohawk Group official warranty documents for further details at www.mohawkgroup.com

24BY24	<p>Brand..... Karastan</p> <p>Style Name / Number Plane Low / KT235</p> <p>Construction..... Tufted</p> <p>Surface Appearance..... Textured Patterned Loop</p> <p>Gauge 1/12" (47.00 rows per 10 cm)</p> <p>Tufted Weight..... 34 oz/yd² (1153 g/m²)</p> <p>Dye Method..... Solution Dyed</p> <p>Fiber Type duracolor. Premium Nylon</p> <p>Stain Release Technology Permanent, Built into the Fiber</p> <p>Soil Release Technology..... Sentry Soil Protection</p> <p>GSA Stain Release Rating.... Passes</p> <p>Backing Material..... EcoFlex NXT</p> <p>Indoor Air Quality Green Label Plus Certified # 1171</p> <p>NSF 140..... Gold</p> <p>Size..... 24" x 24" (.6096 m x .6096 m)</p> <p>Installation Method..... Quarter Turn / Monolithic / Brick Ashlar / Vertical Ashlar / Multi Directional</p> <p>Flammability..... ASTM E 648 Class 1 (Glue Down)</p> <p>Smoke Density..... ASTM E 662 Less than 450</p> <p>Static Propensity AATCC - 134 Under 3.5 KV</p> <p>Warranties: Lifetime Limited Carpet Tile Warranty, Lifetime Limited Duracolor Stain Warranty, Lifetime Static</p>
--------	--

24BY24	<p>Brand..... Karastan</p> <p>Style Name / Number Plane High / KT236</p> <p>Construction..... Tufted</p> <p>Surface Appearance..... Textured Patterned Loop</p> <p>Gauge 1/12" (47.00 rows per 10 cm)</p> <p>Tufted Weight..... 40 oz/yd² (1356 g/m²)</p> <p>Dye Method..... Solution Dyed</p> <p>Fiber Type duracolor. Premium Nylon</p> <p>Stain Release Technology Permanent, Built into the Fiber</p> <p>Soil Release Technology..... Sentry Soil Protection</p> <p>GSA Stain Release Rating.... Passes</p> <p>Backing Material..... EcoFlex NXT</p> <p>Indoor Air Quality Green Label Plus Certified # 1171</p> <p>NSF 140..... Gold</p> <p>Size..... 24" x 24" (.6096 m x .6096 m)</p> <p>Installation Method..... Quarter Turn / Monolithic / Brick Ashlar / Vertical Ashlar / Multi Directional</p> <p>Flammability..... ASTM E 648 Class 1 (Glue Down)</p> <p>Smoke Density..... ASTM E 662 Less than 450</p> <p>Static Propensity AATCC - 134 Under 3.5 KV</p> <p>Warranties: Lifetime Limited Carpet Tile Warranty, Lifetime Limited Duracolor Stain Warranty, Lifetime Static</p>
--------	---

24BY24	<p>Brand..... Karastan</p> <p>Style Name / Number Diagonal Relief / KT237</p> <p>Construction..... Tufted</p> <p>Surface Appearance..... Textured Patterned Loop</p> <p>Gauge 1/12" (47.00 rows per 10 cm)</p> <p>Tufted Weight..... 36 oz/yd² (1221 g/m²)</p> <p>Dye Method..... Solution Dyed</p> <p>Fiber Type duracolor. Premium Nylon</p> <p>Stain Release Technology Permanent, Built into the Fiber</p> <p>Soil Release Technology..... Sentry Soil Protection</p> <p>GSA Stain Release Rating.... Passes</p> <p>Backing Material..... EcoFlex NXT</p> <p>Indoor Air Quality Green Label Plus Certified # 1171</p> <p>NSF 140..... Gold</p> <p>Size..... 24" x 24" (.6096 m x .6096 m)</p> <p>Installation Method..... Quarter Turn / Monolithic / Brick Ashlar / Vertical Ashlar / Multi Directional</p> <p>Flammability..... ASTM E 648 Class 1 (Glue Down)</p> <p>Smoke Density..... ASTM E 662 Less than 450</p> <p>Static Propensity AATCC - 134 Under 3.5 KV</p> <p>Warranties: Lifetime Limited Carpet Tile Warranty, Lifetime Limited Duracolor Stain Warranty, Lifetime Static</p>
--------	--

24BY24	<p>Brand..... Karastan</p> <p>Style Name / Number Fade Relief / KT238</p> <p>Construction..... Tufted</p> <p>Surface Appearance..... Textured Patterned Loop</p> <p>Gauge 1/12" (47.00 rows per 10 cm)</p> <p>Tufted Weight..... 40 oz/yd² (1356 g/m²)</p> <p>Dye Method..... Solution Dyed</p> <p>Fiber Type duracolor. Premium Nylon</p> <p>Stain Release Technology Permanent, Built into the Fiber</p> <p>Soil Release Technology..... Sentry Soil Protection</p> <p>GSA Stain Release Rating.... Passes</p> <p>Backing Material..... EcoFlex NXT</p> <p>Indoor Air Quality Green Label Plus Certified # 1171</p> <p>NSF 140..... Gold</p> <p>Size..... 24" x 24" (.6096 m x .6096 m)</p> <p>Installation Method..... Quarter Turn / Monolithic / Brick Ashlar / Vertical Ashlar / Multi Directional</p> <p>Flammability..... ASTM E 648 Class 1 (Glue Down)</p> <p>Smoke Density..... ASTM E 662 Less than 450</p> <p>Static Propensity AATCC - 134 Under 3.5 KV</p> <p>Warranties: Lifetime Limited Carpet Tile Warranty, Lifetime Limited Duracolor Stain Warranty, Lifetime Static</p>
--------	--

Mohawk Group

Mohawk Industries, Inc. warrants its adhesives for the life of the original installation only when a Mohawk Industries style (product) is installed. Mohawk's floor preparation procedures must be followed to ensure that the substrate has been prepared properly. Failure to use Mohawk Industries adhesives or to follow Mohawk's floor preparation procedures will void all lifetime adhesive warranties. Please contact your local Sales Representative for installation guidelines.

These patterns contain inherent characteristics which may result in pattern run off and/or pattern appearance variations at the seams or tile edges (darker or lighter pattern lines). These characteristics are inherent in the patterns and are not manufacturing defects. Consideration to these characteristics should be given when selecting an installation method.

Chair pads are recommended under office chairs with roller casters to preserve appearance retention, act as a deterrent toward delamination and to prevent premature or accelerated wear. Walk-off tiles from the Tuff Stuff II Collection are recommended at entryways to reduce soiling.

Duracolor by Mohawk Stain Resistant System passes GSA requirements for permanent stain resistance. Under GSA requirements stain resistant carpets must score no less than 8.0 (10.0 is best) on the AATCC Red 40 Stain Scale. Carpet samples must first be exposed to 100 revolutions of the Taber abrader (1,000-gram weight per H-18 wheel) and then the abraded area must be stain tested using AATCC tested using AATCC test method 175.

Mohawk Group is providing this architect folder for the purpose of promoting our commercial business. This folder and its samples shall remain the property of Mohawk Group. Color may vary from dye lot to dye lot. Substitution of material may be made due to improved technology, supply limitations or other factors. The performance of this product is not affected by such variations.

For current and complete specifications please visit www.mohawkgroup.com



24BY24

Brand	Karastan
Style Name / Number	Lenticular Relief / KT240
Construction	Tufted
Surface Appearance	Textured Patterned Loop
Gauge	1/12" (47.00 rows per 10 cm)
Tufted Weight	44 oz/yd ² (1492 g/m ²)
Dye Method	Solution Dyed
Fiber Type	duracolor. Premium Nylon
Stain Release Technology	Permanent, Built into the Fiber
Soil Release Technology	Sentry Soil Protection
GSA Stain Release Rating	Passes
Backing Material	EcoFlex NXT
Indoor Air Quality	Green Label Plus Certified # 1171
NSF 140	Gold
Size	24" x 24" (.6096 m x .6096 m)
Installation Method	Quarter Turn / Monolithic / Brick Ashlar / Vertical Ashlar / Multi Directional
Flammability	ASTM E 648 Class 1 (Glue Down)
Smoke Density	ASTM E 662 Less than 450
Static Propensity	AATCC - 134 Under 3.5 KV
Warranties: Lifetime Limited Carpet Tile Warranty, Lifetime Limited Duracolor Stain Warranty, Lifetime Static	

For LVT spec information, visit our website at
www.mohawkgroup.com



Mohawk Industries, Inc. warrants its adhesives for the life of the original installation only when a Mohawk Industries style (product) is installed. Mohawk's floor preparation procedures must be followed to ensure that the substrate has been prepared properly. Failure to use Mohawk Industries adhesives or to follow Mohawk's floor preparation procedures will void all lifetime adhesive warranties. Please contact your local Sales Representative for installation guidelines.

These patterns contain inherent characteristics which may result in pattern run off and/or pattern appearance variations at the seams or tile edges (darker or lighter pattern lines). These characteristics are inherent in the patterns and are not manufacturing defects. Consideration to these characteristics should be given when selecting an installation method.

Chair pads are recommended under office chairs with roller casters to preserve appearance retention, act as a deterrent toward delamination and to prevent premature or accelerated wear. Walk-off tiles from the Tuff Stuff II Collection are recommended at entryways to reduce soiling.

Duracolor by Mohawk Stain Resistant System passes GSA requirements for permanent stain resistance. Under GSA requirements stain resistant carpets must score no less than 8.0 (10.0 is best) on the AATCC Red 40 Stain Scale. Carpet samples must first be exposed to 100 revolutions of the Taber abrader (1,000-gram weight per H-18 wheel) and then the abraded area must be stain tested using AATCC tested using AATCC test method 175.

Mohawk Group is providing this architect folder for the purpose of promoting our commercial business. This folder and its samples shall remain the property of Mohawk Group. Color may vary from dye lot to dye lot. Substitution of material may be made due to improved technology, supply limitations or other factors. The performance of this product is not affected by such variations.

For current and complete specifications please visit www.mohawkgroup.com



