

# EPD Environmental Product Declaration

## MOBILITY table

Ref. MB374000V4

Report Data 2012

### Certificates

ISO 9001:2008

ISO 14001:2004

ISO 14006. Ecodiseño

PEFC. Programme for the Endorsement of Forest Certification

FSC. Forest Stewardship Council

GBCe. Green Building Council Spain



### 1. Details of the system

Type	New Product	<input checked="" type="checkbox"/>	Redesign	<input type="checkbox"/>	Studied Year 2012
------	-------------	-------------------------------------	----------	--------------------------	-------------------

Declaration	From extraction of raw materials to complete desk solution, including end of life.
Scope:	The detail of each of the phases considered and its scope is included below

Materials	Production	Transport	Use	End of life
Including the extraction and processing of raw materials and component sourcing to its delivery at the Actiu Technological Park.	Consider the production and assembly processes used in Actiu.	Includes from the Actiu Technological Park to our customers facilities. Transport is provided through light commercial transport.	This stage has not environmentally relevance for life cycle analysis.	Any product can be disposed of in different ways, or become a resource. Drawing on national average dates, it is supposed that aluminium, wood and cardboard packaging is recycled, while the rest is treated as urban waste.

### 2. RAW MATERIALS USED FOR THE PRODUCT. Product specifications, including packaging

	KG of product solution	Percentage %	Quality of finishes	
			Production of raw materials	Processed
Aluminium	9,12	14,90%	Bibliographic data	Bibliographic data
Steel	20,684	33,79%	Bibliographic data	Bibliographic data
Plastic	1,0178	1,66%	Bibliographic data	Bibliographic data
Wood	22,81	37,26%	Bibliographic data	Bibliographic data
Others	0,565	0,92%	Bibliographic data	Bibliographic data
Coarrugated Board	7,02	11,47%	Bibliographic data	Bibliographic data
<b>TOTAL</b>	<b>61,2168</b>	<b>100,00%</b>		
<b>% recycled materials</b>		<b>56,17%</b>		
<b>% recyclable materials</b>		<b>97,41%</b>		

ACTIU product design is made to facilitate the separation of its components and recycling.

The product is designed to help companies LEED® certification. You can obtain LEED® credits with our product. On the one hand, contains a high percentage of recycled materials and is manufactured with low emissions to the atmosphere. On the other hand, has been designed with ergonomic standards. Finally, it can be easily recycled because it is designed for disassembly and identification of very simple components. This will help you achieve LEED® credits for employee health and innovation

The verification process life cycle analysis is performed by independent experts in Ecodesign (Consultant Business Area) and using the criteria of the standard UNE 150301:2003 "Ecodesign".

This product has been manufactured at the facilities of ACTIU BERBEGAL Y FORMAS, S.A.

[www.actiu.com](http://www.actiu.com)

# EPD Environmental Product Declaration

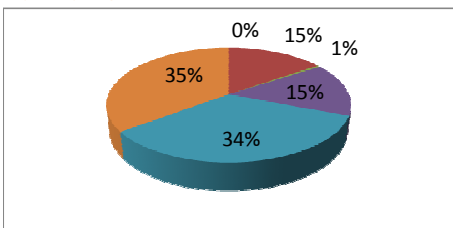
## MOBILITY table

Ref. MB374000V4

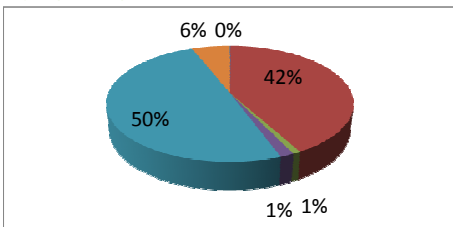
Report Data 2012

### 3. Impacts produced by category. Five substances area included in each category have the greatest impact in each category

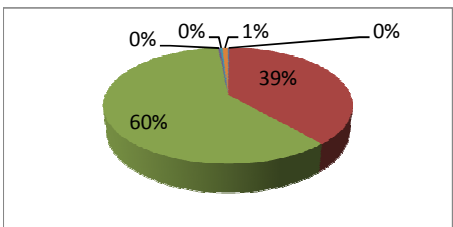
Impact category	Substance	Unit	Total
<b>ACIDIFICATION</b>	Remaining Substances	kg SO2 eq	2,22045E-16
	Ammonia	kg SO2 eq	0,258108862
	Nitrogen dioxide	kg SO2 eq	0,008005503
	Nitrogen oxides	kg SO2 eq	0,257740208
	Sulfur dioxide	kg SO2 eq	0,571543307
	<b>TOTAL</b>	<b>kg SO2 eq</b>	<b>1,692822925</b>



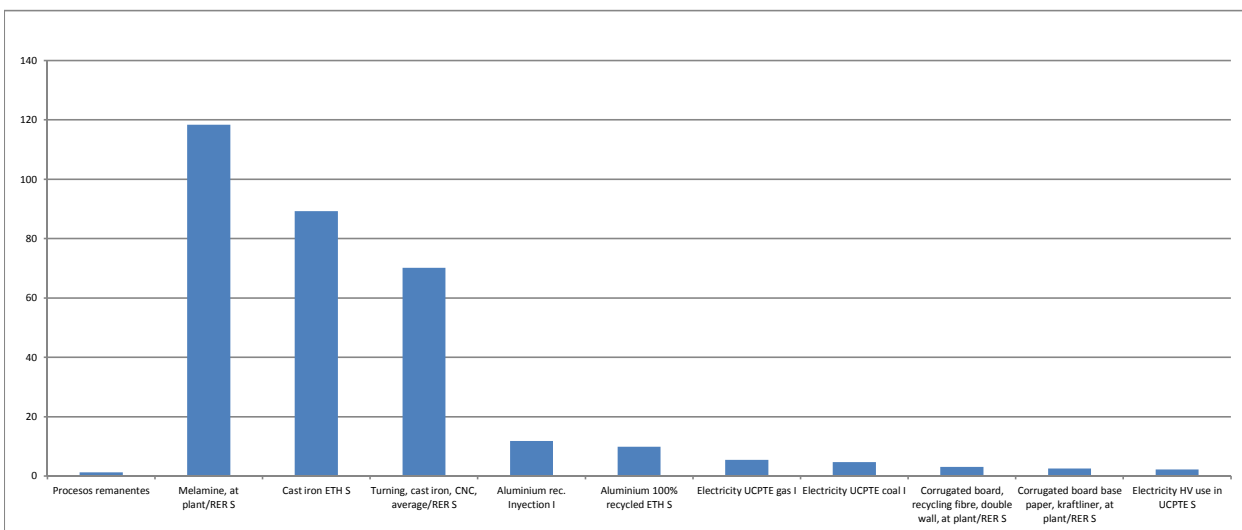
Impact category	Substance	Unit	Total
<b>EUTROFIZATION</b>	Remaining Substances	kg P04--- eq	0,000182601
	Ammonia	kg P04--- eq	0,056461314
	Dinitrogen monoxide	kg P04--- eq	0,001160578
	Nitrogen dioxide	kg P04--- eq	0,002081431
	Nitrogen oxides	kg P04--- eq	0,067012454
	Ammonium, ion	kg P04--- eq	0,007975315
	<b>TOTAL</b>	<b>kg SO2 eq</b>	<b>0,178172547</b>



Impact category	Substance	Unit	Total
<b>GLOBAL WARMING</b>	Remaining Substances	kg CO2 eq	0,711100819
	Carbon dioxide	kg CO2 eq	117,0520402
	Carbon dioxide, fossil	kg CO2 eq	182,6430731
	Carbon monoxide	kg CO2 eq	0,869080228
	Carbon monoxide, fossil	kg CO2 eq	1,102883414
	Dinitrogen monoxide	kg CO2 eq	2,642546888
	<b>TOTAL</b>	<b>kg SO2 eq</b>	<b>324,4341447</b>



### Impact of group elements (materials, processes, energy, use, transport and waste)



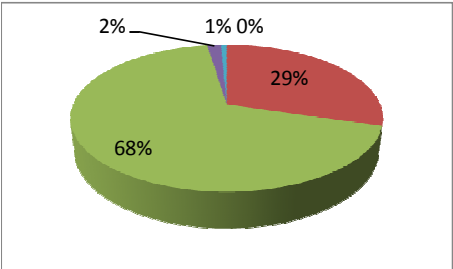
# EPD Environmental Product Declaration

## MOBILITY table

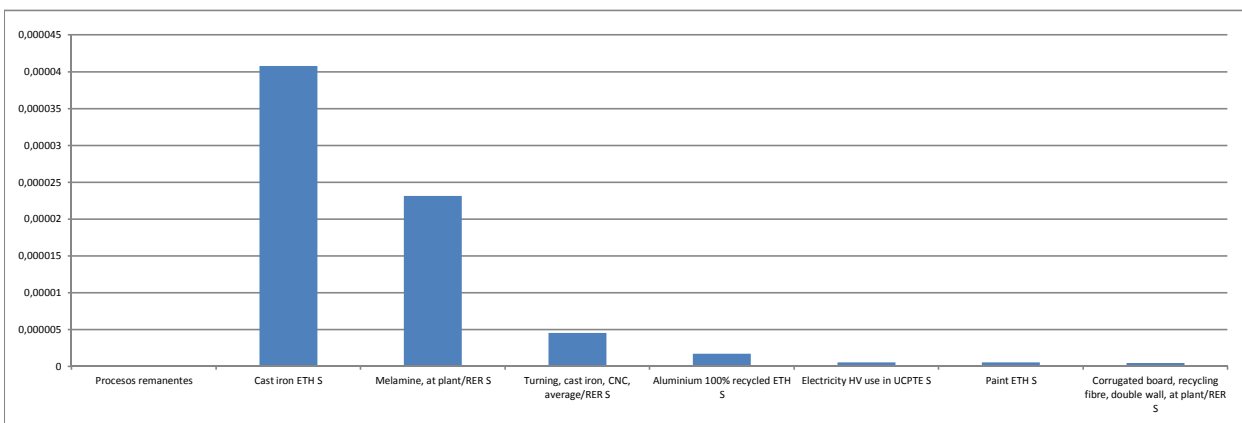
Ref. MB374000V4

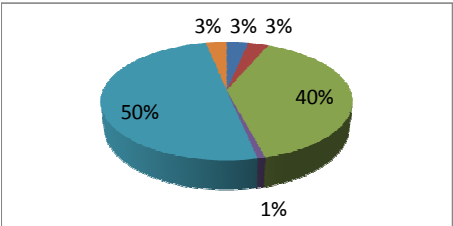
Report Data 2012

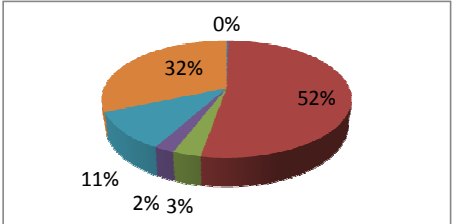
### 4. Impacts produced by category. Five substances area included in each category have the greatest impact in each category

Impact category	Substance	Unit	Total
<b>REDUCING OZONE</b>			
	Remaining Substances	kg CFC-11 eq	2,33378E-09
	Methane, bromochlorodifluoro-, HFC-1211	kg CFC-11 eq	2,14557E-05
	Methane, bromotrifluoro-, Halon 1301	kg CFC-11 eq	4,92395E-05
	Methane, chlorodifluoro-, HFC-22	kg CFC-11 eq	1,21869E-06
	Methane, tetrachloro-, CFC-11	kg CFC-11 eq	5,0406E-07
<b>TOTAL</b>		<b>kg SO2 eq</b>	<b>7,2513E-05</b>

### Impact of group elements (materials, processes, energy, use, transport and waste)



Impact category	Substance	Unit	Total
<b>PHOTOCHEMICAL SMOG</b>			
	Remaining Substances	kg C2H4 eq	0,001244992
	Butane	kg C2H4 eq	0,001173604
	Carbon monoxide	kg C2H4 eq	0,014945966
	Carbon monoxide, biogenic	kg C2H4 eq	0,000317749
	Carbon monoxide, fossil	kg C2H4 eq	0,018966785
	Ethane	kg C2H4 eq	0,001194855
<b>TOTAL</b>		<b>kg SO2 eq</b>	<b>0,295156555</b>

Impact category	Substance	Unit	Total
<b>NON-RENEWABLE RESOURCES</b>			
	Remaining Substances	MJ eq	5,230487832
	Coal, 18 MJ per kg, in ground	MJ eq	820,2990479
	Coal, 29,3 MJ per kg, in ground	MJ eq	47,96704989
	Coal, brown, 8 MJ per kg, in ground	MJ eq	34,67615525
	Coal, brown, in ground	MJ eq	163,9759036
	Coal, hard, unspecified, in ground	MJ eq	492,2509068
<b>TOTAL</b>		<b>kg SO2 eq</b>	<b>5505,838232</b>

<b>WASTE</b>	<b>Total NO HAZARDOUS</b>	<b>KG</b>	<b>28,8</b>
	<b>Total HAZARDOUS</b>	<b>KG</b>	<b>0,0217</b>

# EPD Environmental Product Declaration

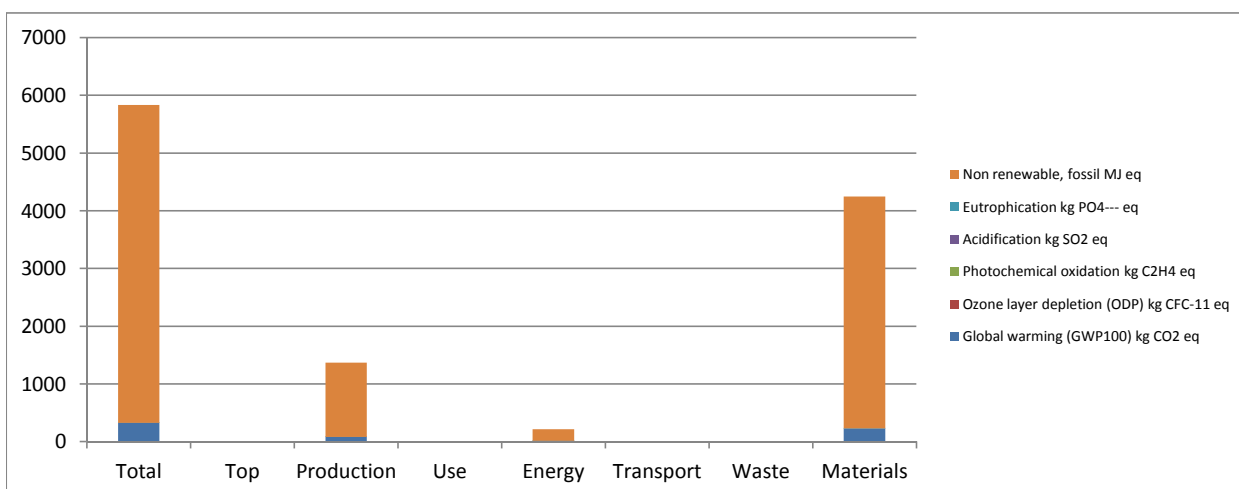
## MOBILITY table

Ref. MB374000V4

Report Data 2012

### 5. Impact produced by life cycle stage. In includes six stages: Production, Use, Energy, Transport, Waste and Materials.

Impact Category	Uts.	Total	Top	Production	Use	Energy	Trsp.	Waste	Mat.
Global warming (GWP100)	kg CO2 eq	324,4341447	0	82,73012739	0	13,72902232	0,544	0	227,4
Ozone layer depletion (ODP)	kg CFC-11 eq	7,2513E-05	0	4,5144E-06	0	1,11556E-06	1E-09	0	7E-05
Photochemical oxidation	kg C2H4 eq	0,295156555	0	0,068430371	0	0,005807753	8E-04	0	0,22
Acidification	kg SO2 eq	1,692822925	0	0,422736791	0	0,054371759	0,009	0	1,206
Eutrophication	kg PO4--- eq	0,178172547	0	0,051778986	0	0,004090015	0,001	0	0,121
Non renewable, fossil	MJ eq	5505,838232	0	1287,179831	0	201,6182736	0,027	0	4017



# EPD Environmental Product Declaration

## MOBILITY table

Ref. MB374000V4

Report Data 2012

### 6. Ecodesign improvements considered.

ACTIU products are designed considering different environmental strategies. According to their level of complexity, the strategies used are classified into one of the following. Here are some of the choices for ecodesign significant product.

PRODUCT STRATEGY ECODESIGN	CHOICES
Low impact materials selection	Designed to be manufactured with 56% recycled materials
	100% recycled aluminium
	Powder paint with no VOC emissions
	Limitation on use of hazardous substances. Without chromium, mercury, cadmium
	Board from recycled Wood fibers
	Adhesives for thickness table set without VOC contents.
Optimization of product techniques	Sustainable E1 Woods according to EN 13986 / low emissions that do not emit formaldehyde.
	Recycled cardboard packaging
	Optimizing energy use throughout the production process
	Low manufacturing energy consumption. Minimum environmental impact.
	Painting processes of high technology systems.
	Recovery unused paint in the process. Zero emissions of VOCs.
Optimization of distribution system	Closed water circuits. Heat recovery.
	Automated manufacturing systems. Planning the cutting process.
Optimization of product life	Reducing energy. Removable systems. Low volume packaging. Spaces optimization.
	Saving energy and Flexibility. Modular system adaptable between different models.
	Long life guarantees
	Adaptability and growth facilities.
Optimization of the end of system life	Replacement parts possibilities.
	Easy Maintenance
	Easy separation of product components
	High degree of recyclability of the product: 97%
	Packaging reuse system between ACTIU and its providers to avoid waste generation

### Bibliography and references

ISO 14025 Environmental labels and declarations – Type III

UNE-EN-ISO 150301:2003 "Ecodesign".

ISO 14044:2006 "Environmental management. Life cycle analysis. Requirements and guidelines"

UNE 150301:2003 "Ecodesign"

Environmental impacts methods

Data base: ETH-ESU System processes, Ecoinvent system processes, IDEMAT, EDIP, IPCC, Ecological Scarcity 2006.